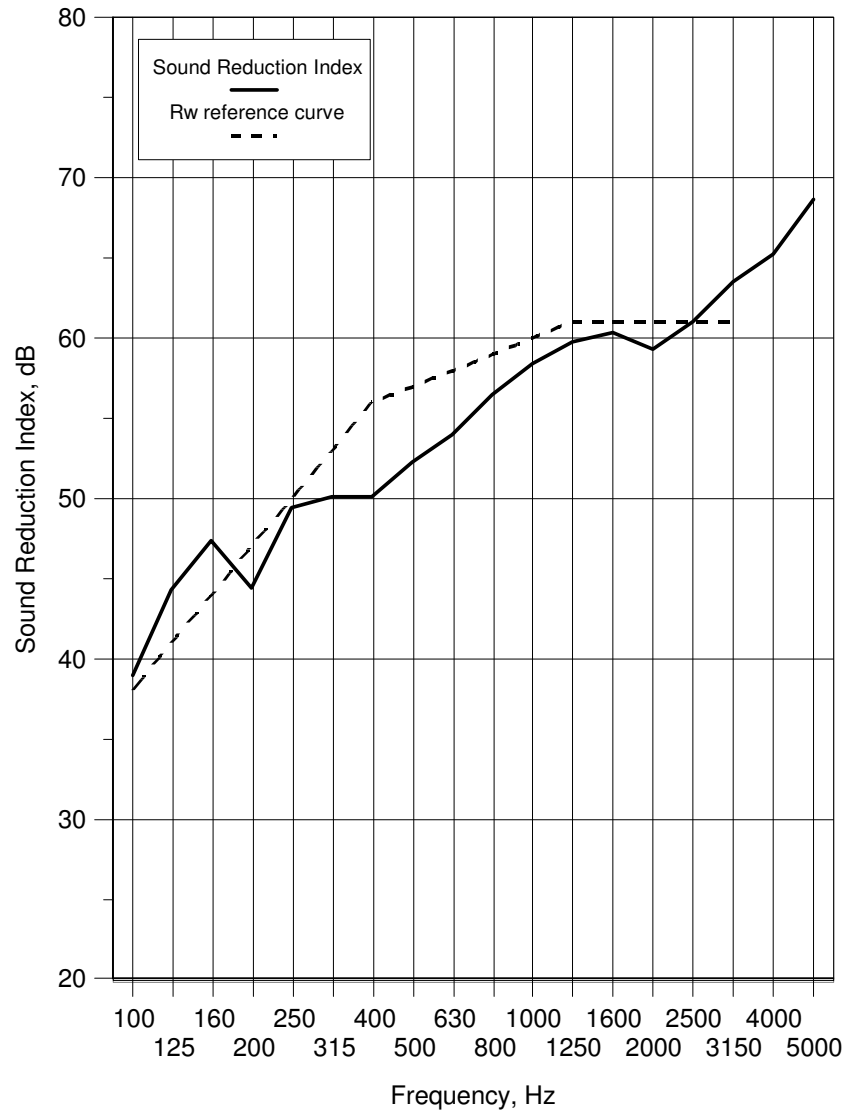


## Data Sheet 1

|                        |  |                         |               |                  |
|------------------------|--|-------------------------|---------------|------------------|
| <b>Test Number :</b>   | 3  | <b>Test Room:</b>       | <b>Source</b> | <b>Receiving</b> |
| <b>Client:</b>         | Sash Windows                                   | <b>Air temperature:</b> | 17 °C         | 17.5 °C          |
| <b>Test Date:</b>      | 09/09/2014                                     | <b>Air humidity:</b>    | 64 %          | 62 %             |
| <b>Sample height:</b>  | 1.92 m   | <b>Volume:</b>          | 60 m3         | 300 m3           |
| <b>Sample width:</b>   | 1.155 m  |                         |               |                  |
| <b>Sample weight:</b>  | n/a kg/m2                                      | <b>Air Pressure:</b>    | 1014 mbar     |                  |
| <b>Product</b>         | Acoustic Sash Window & Secondary Glazing       |                         |               |                  |
| <b>Identification:</b> | Plus secondary glazing of 6.8mm acoustic glass |                         |               |                  |

| Freq<br>f<br>Hz             | Sound<br>Reduction<br>Index, dB |                         |
|-----------------------------|---------------------------------|-------------------------|
|                             | 1/3 Oct                         | 1/1 Oct                 |
| 50+                         | 32.2                            |                         |
| 63+                         | 28.1                            | 31.2                    |
| 80+                         | 38.2                            |                         |
| 100                         | 38.9                            |                         |
| 125                         | 44.3                            | 42.1                    |
| 160                         | 47.4                            |                         |
| 200                         | 44.4                            |                         |
| 250                         | 49.4                            | 47.2                    |
| 315                         | 50.1                            |                         |
| 400                         | 50.1                            |                         |
| 500                         | 52.3                            | 51.8                    |
| 630                         | 54.0                            |                         |
| 800                         | 56.5                            |                         |
| 1000                        | 58.4                            | 58.0                    |
| 1250                        | 59.8                            |                         |
| 1600                        | 60.4                            |                         |
| 2000                        | 59.3                            | 60.2                    |
| 2500                        | 61.1                            |                         |
| 3150                        | 63.5 *                          |                         |
| 4000                        | 65.3 *                          | 65.4                    |
| 5000                        | ≥ 68.7                          |                         |
| 6300+                       | ≥ 70.9                          |                         |
| 8000+                       | ≥ 62.0                          | 58.3                    |
| 10000+                      | 54.2 *                          |                         |
| <b>Average<br/>100-3150</b> | 53.1                            | <b>Version<br/>v2.1</b> |



Rating according to BS EN ISO 717-1:2013

Rw(C;Ctr)= **57 (-1;-5) dB**

\* shows measurement corrected for background

+ shows frequency beyond standard and not UKAS accredited